



**Sidwell** serves county and city government, and offers:

**GIS Land Records Solutions**  
*Cadastral mapping*  
*Geodatabase conversion*  
*Workflow implementation*  
*Tax/CAMA integration*  
*Parcel Builder™ software*  
*FARMS™ software*

**Photogrammetric services**  
*Digital image acquisition*  
*LiDAR*  
*Aerial photo acquisition*  
*Topographic & planimetric feature extraction*  
*Digital orthophoto mapping*  
*Distributor-Magellan Professional GPS equipment*

**Other GIS Services**  
*GIS website design, implementation, & hosting*  
*ArcPad® customization*  
*Geodatabase warehousing*  
*ESRI Authorized training*

Sidwell is a Preferred ESRI Business Partner, developer and reseller, and was named Foundation Partner of the Year by ESRI in 2003 and again in 2008.

**For more information, visit:**  
[www.sidwellco.com](http://www.sidwellco.com)  
[www.ParcelBuilder.com](http://www.ParcelBuilder.com)



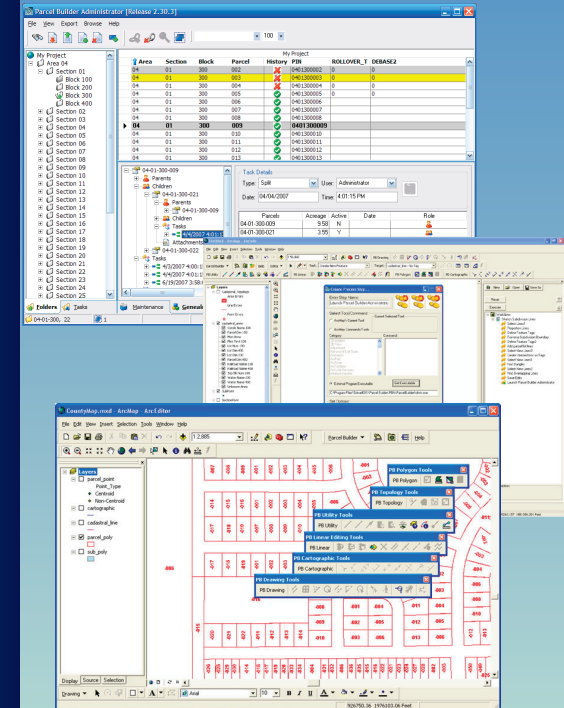
**The Sidwell Company**  
 675 Sidwell Court  
 St. Charles, IL 60174  
 877.SIDWELL  
[www.sidwellco.com](http://www.sidwellco.com)  
[www.ParcelBuilder.com](http://www.ParcelBuilder.com)

**LEARN MORE:**

Call Sidwell at  
**(866) 67GETPB**  
**(866-674-3872)**  
 today to learn more about the benefits that the Sidwell ELA will bring to your small government organization. You can also visit [www.ParcelBuilder.com/getpb](http://www.ParcelBuilder.com/getpb) for more details. While you're there, make sure to take a look at Sidwell's interactive demonstration of Parcel Builder and sign up for a live Parcel Builder webcast!

**New!**

**Enterprise License Agreement Program**



**Call:**  
**866.67GETPB**  
**866.674.3872**



# Sidwell Software ELA.



To help local government get the GIS technology they need, Sidwell has developed a Small Municipal and County Government Enterprise License Agreement (ELA) Program. The core technology included in this ELA is the Parcel Builder™ software suite, which includes PB-FARMS™. Both Parcel Builder and the FARMS product were developed exclusively by Sidwell. Parcel Builder is the comprehensive parcel mapping solution for ArcGIS, and has been recognized by GIS industry leader ESRI as the premier third-party cadastral maintenance solution for the Geodatabase. FARMS (Farmland Assessment and Report Management System) is a GIS solution to support the assessment official in the efficient calculation of value for agricultural parcels.

Like most businesses these days, city and county government are being called upon to do more with less. This program is intended to provide small government entities across the country with easy and affordable access to the GIS technology they need. Under this agreement, the government entity will not have to pay for each seat of software, which might prove to be beyond their budgetary constraints. Instead, the program provides for unlimited deployments of Sidwell software to municipalities and counties with populations of 100,000 or less in a simple three-tiered pricing structure based on their population figures. Small government entities that take advantage of this program will position themselves to better leverage their investment in GIS by sharing data throughout their enterprise and improving the process of communication and decision making at all levels.

*The ELA program provides for unlimited deployments of Sidwell software to municipalities and counties with populations of 100,000 or less in a simple three-tiered pricing structure which is based on population figures.*



**Parcel Builder-Administrator™** provides unsurpassed parcel number management capabilities, which includes full integration with ESRI's Geodatabase archiving functionality, document association within a powerful parcel genealogy solution, and real-time notification to tax and CAMA applications of all land transactions originating from the GIS.

**PBA-Genealogy** is an extension to the Administrator module of Parcel Builder. Genealogy allows the user to designate the parent-child relationships for all parcels that are added to the parcel database through parcel splits and consolidations. Genealogy also allows existing documents and scanned images to be associated with a parcel or a transaction.

**Parcel Builder-MapEditor™** adds over 40 tools to ArcMap along with a customizable workflow manager to streamline editing tasks, all specifically designed for maintaining cadastral maps in a highly efficient and accurate environment.

**Parcel Builder-MapPlotter™** is a solution for generating plat books that can be extended to produce any uniform series of map pages. MapPlotter can also plot parcel-specific maps quickly in an environment separate from ArcMap.

**Parcel Builder-MapView™** provides read-only, real-time desktop access to the cadastral Geodatabase and associated tax/CAMA data, all from a simple user interface at a low price point.

**Parcel Builder-FARMS™** is designed to support the assessment professional in the process of calculating values for agricultural properties, and uses GIS functions to efficiently determine new acreage measurements for the boundaries created during the process of spatial polygon overlay with parcel and soil maps.

Learn more:

Call Sidwell at **(866) 67GETPB (866-674-3872)** today to learn more about the benefits that the Sidwell ELA will bring to your small government organization. You can also visit [www.ParcelBuilder.com/getpb](http://www.ParcelBuilder.com/getpb) for more details. While you're there, make sure to take a look at Sidwell's interactive demonstration of Parcel Builder and sign up for a live Parcel Builder webcast!